



UltraWare



Printing Tabs to the Canon® imageRUNNER™ and imagePASS™-M1 Controller

COPYRIGHT NOTICE

Alto Imaging Technologies, Inc.
3090 Dauphin Square Connector
Mobile, AL 36607

Copyright © 1998–2002 by Alto Imaging Technologies, Inc.

All rights reserved. This manual may not be copied in whole or in part, nor transferred to any other media or language, without the express written permission of Alto Imaging Technologies, Inc.

Rev. 20021021

TRADEMARKS

UltraWare, Image Arranger, UltraDoc, UltraPrint, UltraCopy and UltraNet are either trademarks or registered trademarks of Alto Imaging Technologies, Inc. in the United States and/or other countries.

Adobe and PostScript are either trademarks or registered trademarks of Adobe Systems Incorporated in the United States and/or other countries. Canon is either a trademark or registered trademark of Canon Inc. in the United States and/or other countries. Heidelberg and Digimaster are either trademarks or registered trademarks of Heidelberger Druckmaschinen AG in the United States and/or other countries. Microsoft and Windows are either trademarks or registered trademarks of Microsoft Corporation in the United States and/or other countries. Novell is either a trademark or registered trademark of Novell, Inc. in the United States and/or other countries. Sun, Sun Microsystems, Solaris, and Solstice NFS Client are either trademarks or registered trademarks of Sun Microsystems, Inc. in the United States and/or other countries.

PROPRIETARY STATEMENT

Copyright © 1998–2002 by Alto Imaging Technologies, Inc.

All Rights Reserved. This software may not be reproduced, modified, displayed, transferred, or copied in any form or in any manner or on any media, in whole or in part, without the express written permission of Alto Imaging Technologies, Inc.

COLOPHON

This manual was written and formatted in Microsoft Word 2000. Typefaces used are Arial Black, Courier New, Garamond, Symbol, Webdings, and Wingdings.

Overview

Both Image Arranger and UltraPrint Client support output to the Canon imageRUNNER devices through the manufacturer's print drivers available for each printer. UltraPrint provides advanced functionality through Custom Print Common including page level tray pulls from an easy-to-use, point-and-click interface.

Printing is supported by the imagePASS-M1 or Network Multi-PDL Printer Board. The imagePASS-M1 Print Controller is a self-contained external RIP specifically for the imageRUNNER 7200/8500/85/105 and supports PCL and the PostScript 3 printer language. The Network Multi-PDL Printer Board is an internal print controller that supports PCL and emulation of the PostScript 3 printer languages.

This document provides instructions for printing on index tab stock from Image Arranger and UltraPrint using the interface provided by the Canon iR105-M1 PS Ver 2.0 print driver, and from the Custom Print Common interface available in UltraPrint Client.

Printing Tabs Using Printer Driver

- These instructions assume that the Canon iR105-M1 PS Ver 2.0 printer has been installed, configured, and tested on the PC where Image Arranger and/or UltraPrint Client are installed.
- A paper tray at the imageRUNNER device must be loaded with index tab stock and specified as Index Tab for the Media Type.
- Tabs can be scanned or created in the Image Arranger application (create tabs as: Scaling > Bleed-edge fit to Letter). See Image Arranger User Guide for details.

1. Select **Print** from the **File** menu.



From UltraPrint Client, select Setup > Printer to access printer driver.

The **Print** dialog box appears as illustrated in Figure 1.

2. Select the **Canon iR105-M1 PS Ver 2.0** printer and then click Properties.

The Canon iR105-M1 PS Ver 2.0 Document Properties dialog box appears.

3. Select **Paper Source** from the **Fiery Printing** tab as illustrated in Figure 2.
4. Select **Define** from the **Mixed Media** section.

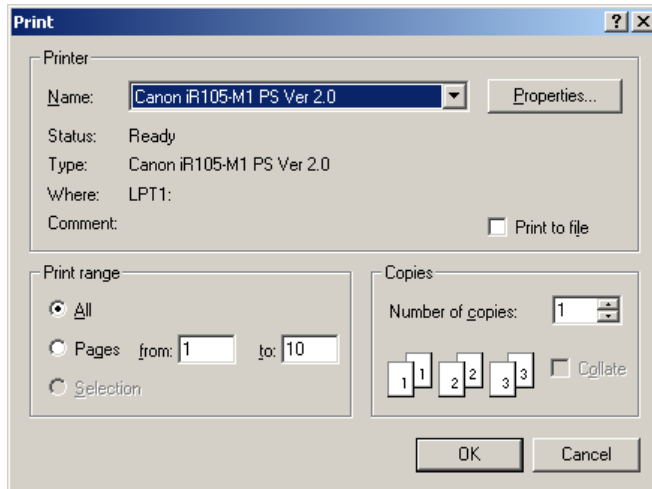


Figure 1

5. Type the physical page number for each tab in the document (may be specified as contiguous or non-contiguous range i.e. 1-5, or 5,11,18,27,37) in the **Page** field.
6. Select **Media** as *Index Tab*.
7. Select **Input** (specify as drawer number corresponding to tray that contains index tab stock)
8. Click **Add**.

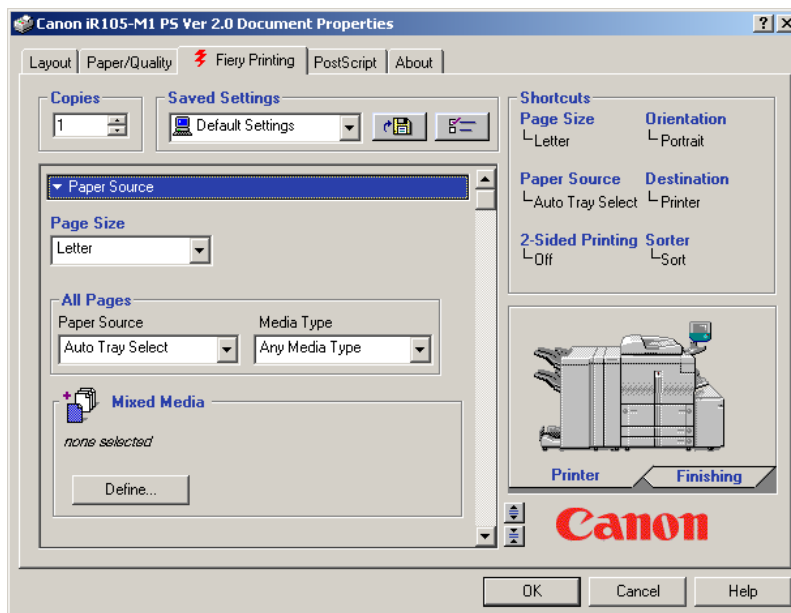


Figure 2

The **Mixed Media** dialog box appears as illustrated in Figure 3.

9. Click **OK** to return to the **Canon iR105-M1 PS Ver 2.0 Document Properties** dialog box.

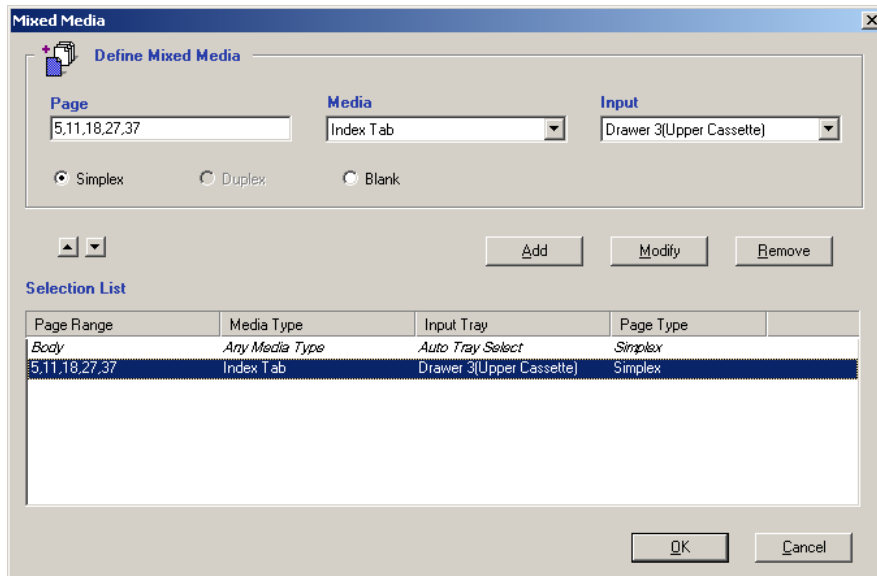


Figure 3

10. Use the scroll buttons to move down to the **Select Tab Position** setting and then enter **128**.
11. The **Canon iR105-M1 PS Ver 2.0 Document Properties** dialog box appears as illustrated in Figure 4.
12. Make other print settings as required, and then click **OK** to return the **Print** dialog box.
13. Click **OK** to print.

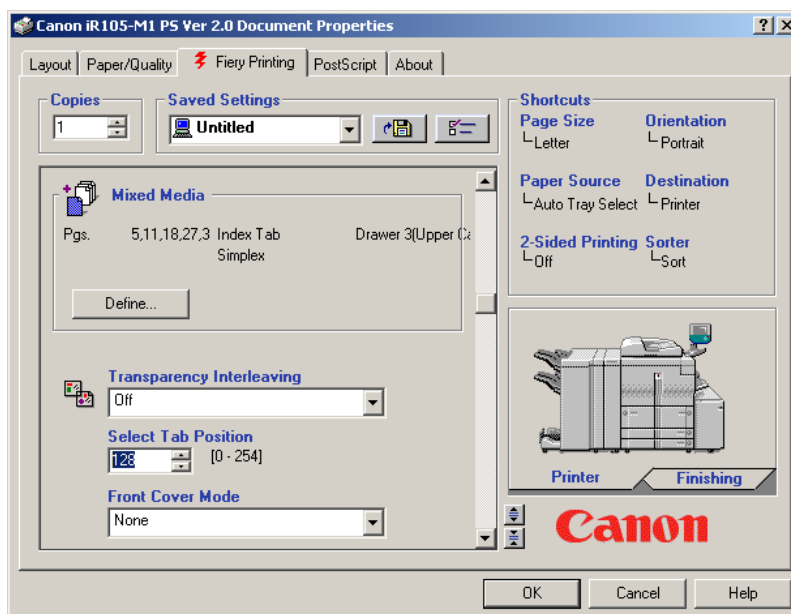


Figure 4

Printing Tabs Using Custom Print Common

- These instructions assume that the Canon iR105-M1 PS Ver 2.0 printer has been installed, configured, and tested on the PC where UltraPrint Client are installed.
- A paper tray at the imageRUNNER device must be loaded with index tab stock and specified as Index Tab for the Media Type.
- Tabs can be scanned or created in the Image Arranger application (create tabs as: Scaling > Bleed-edge fit to Letter). See Image Arranger User Guide for details.

1. Select the **Canon iR105-M1 PS Ver 2.0** from the **Printer** drop-down list on the **Info** tab for the selected **Book**.
2. Click **Setup** from the **Printer** section on the **Info** tab.

The **Page Setup** dialog box appears.

3. Click **Printer**.
4. The **Page Setup (Printer)** dialog box appears.
5. Select **Properties**.

The **Canon iR105-M1 PS Ver 2.0 Document Properties** dialog box appears.

6. Select **Paper Source** from the **Fiery Printing** tab as illustrated in Figure 2.
7. Use the scroll buttons to move down to the **Select Tab Position** setting and then enter **128**.



Set Select Tab Position from Printing Preferences for the Canon iR105-M1 PS Ver 2.0 printer from the printer folder to define a default value.

8. The **Canon iR105-M1 PS Ver 2.0 Document Properties** dialog box appears as illustrated in Figure 4.
9. Make other print settings as required, and then click **OK** to return the **Print** dialog box.
10. Select **Custom Print > Custom Print Common** from the **File** menu.

The **Custom Print Common** interface appears.

14. Using the **Page Selector** choose the page number for each tab in the document.
15. Specify as drawer number corresponding to tray that contains index tab stock from the **Paper Source** drop-down list in the **Page Level Settings** section.

16. Make other print settings as required, and then click **OK** to return the **Print** dialog box.
17. Click **OK** to print.

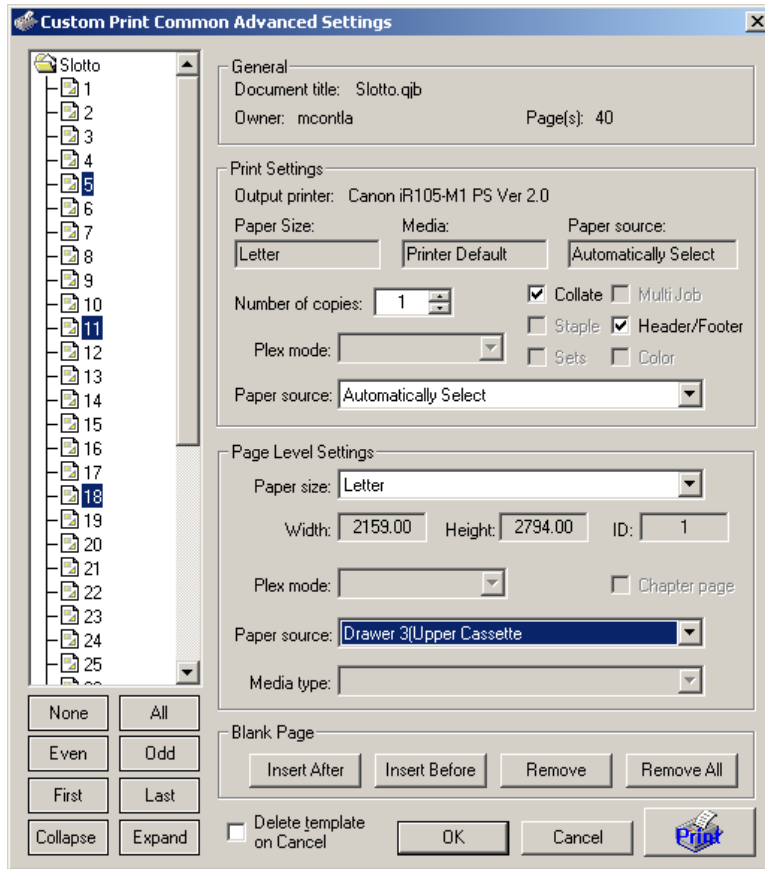


Figure 5